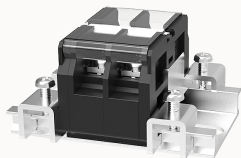


Overview

Product information



DGR20-10A(H)-12010000254

Transfer barrier terminal blocks 子, Rated current: 20A. Rated voltage (UL) : 600V, Cross section: 24~12AWG, pitch: 9.5mm, Color: black, Contact surface: Tin

Product advantages

- ☒ Screw connection for worldwide use
- ☒ Fence type wiring structure, stable and reliable connection
- ☒ Provide the cabinet and panel electrical transfer connections

Product certification



Technical data

Product drawing

3D model

□

Connection capacity

AWG	24~12AWG
Torque	0.8N.m

Electrical parameters UL

Rated voltage (B)	600V
Rated voltage (C)	600V
Rated voltage (D)	600V
Rated current (B)	20A
Rated current (D)	5A

Rated current (C)	20A
-------------------	-----

Item properties

Type of installation	panel
Pin arrangement	Double-row in a straight line
Connection method	Screw connection
Screwdriver	slotted-phillips screwdriver
screw thread	M3.5
Pitch	9.5mm
Number of potentials	2
Pluggable or not	no
Number of rows	1

Material data

Environmental items	Compliant with REACH/RoHS
Contact material	Copper alloy
Contact point metal surface	Nickel plating
Insulation Materials	PC
Insulating material group	IIIa
Flammability rating	UL94V-0

Mechanical tests

Test Specification	UL1059
--------------------	--------

Environmental data

Ambient temperature (operation)	-40°C~125°C(depending on derating curve)
---------------------------------	--

Accessories

Accessories

Bridge

K24

Business data

Order number	12010000254
Packing unit	40
Minimum order quantity	/
Products weight (without packaging)	39.5