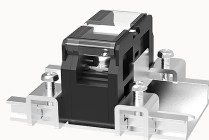


Overview

Product information



DGR30-10A(H)-12010000263

Transfer barrier terminal blocks, Rated current: 30A. Rated voltage (UL) : 600V, Cross section: 20~10AWG, pitch: 11.5mm, Color: black, Contact surface: Tin

Product advantages

- ☒ Screw connection for worldwide use
- ☒ Fence type wiring structure, stable and reliable connection
- ☒ Provide the cabinet and panel electrical transfer connections

Product certification



Technical data

Product drawing

3D model

□

Connection capacity

AWG

20~10AWG

Electrical parameters UL

| | |
|-------------------|------|
| Rated voltage (B) | 600V |
| Rated voltage (C) | 600V |
| Rated voltage (D) | 600V |
| Rated current (B) | 30A |
| Rated current (D) | 5A |
| Rated current (C) | 30A |

Item properties

| | |
|----------------------|-------------------------------|
| Type of installation | panel |
| Pin arrangement | Double-row in a straight line |
| Connection method | Screw connection |
| Screwdriver | slotted-phillips screwdriver |
| screw thread | M4 |
| Pitch | 11.5mm |
| Number of potentials | 1 |
| Pluggable or not | no |
| Number of rows | 1 |

Material data

| | |
|-----------------------------|---------------------------|
| Environmental items | Compliant with REACH/RoHS |
| Contact material | Copper alloy |
| Contact point metal surface | Nickel plating |
| Insulation Materials | PC |
| Insulating material group | IIIa |
| Flammability rating | UL94V-0 |

Mechanical tests

| | |
|--------------------|--------|
| Test Specification | UL1059 |
|--------------------|--------|

Environmental data

| | |
|---------------------------------|---|
| Ambient temperature (operation) | -40°C~125°C (depending on derating curve) |
|---------------------------------|---|

Accessories

Accessories

| | |
|--|--|
| | |
|--|--|

Business data

| | |
|-------------------------------------|-------------|
| Order number | 12010000263 |
| Packing unit | 54 |
| Minimum order quantity | / |
| Products weight (without packaging) | 40 |