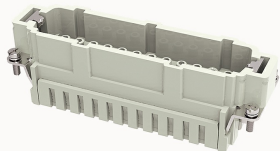


Overview

Product information



DE-024-MC-21020000119

Heavy-duty insert, Number of contacts: 24+PE, Dimension: 24B, Rated voltage : 500V, Rated current: 16A, Male insert, Crimping connector

Product advantages

- ☑ Crimping connection technology, high wiring efficiency
- ☑ Suitable for vibration occasions;
- ☑ The wiring harness can be pre-installed;
- ☑ Choose contacts with different wire diameters and coatings;
- ☑ High-density pins, saving installation space;
- ☑ With grounding protection.

Product certification



Technical data

Product drawing

3D model

□

Marking

classification	Insert
Series	DE

versions

Connection method	Crimping connection
Female/Male	Male
Dimension	24B
Number of positions	24

PE Contacts	Yes
-------------	-----

Material characteristics

Material (insert)	Polycarbonate (PC)
Material (Contact)	Copper alloy
Surface (Contact)	Silver plated/gold plated
Flammability rating	V-0
color	Grey/White (RAL 7032)
RoHS	Comply with RoHS exemptions

Electrical parameters

Rated current	16A
	500V
Rated pulse voltage	6KV
Pollution level	3
On the basis of UL /CSARated current	600V
Insulation resistance	≥10000MΩ
Contact resistance	≤1mΩ
Temperature range	-40℃~+125℃
working life-mating cycles	≥500 time
Strip length	7.5mm
Conductor cross sections (mm²)	0.14-4.0mm²
Conductor cross sections(AWG)	26-12AWG

Standards

Connection meets standards	DIN EN 60664 DIN EN 61984
----------------------------	---------------------------

Accessories

Accessories

Crimping tool Removal tool	/
----------------------------	---

Business data

Order number	21020000119
Packing unit	100
Minimum order quantity	5
Products weight (without packaging)	69