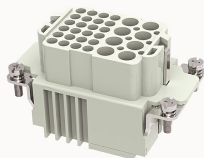


Overview

Product information



DK-8/24-FC-21020000126

Heavy-duty insert, Number of contacts: 8/24+PE, Dimension: 10B, Rated voltage : 400/160V, Rated current: 16/10A, Female insert, Crimping connector

Product advantages

- ☑ Crimping connection technology, high wiring efficiency
- ☑ Suitable for vibration occasions;
- ☑ The wiring harness can be pre-installed;
- ☑ Choose contacts with different wire diameters and coatings;
- ☑ High-density pins, saving installation space;
- ☑ With grounding protection.

Product certification



Technical data

Product drawing

3D model

□

Marking

classification	Insert
Series	DK

versions

Connection method	Crimping connection
Female/Male	Female
Dimension	10B
Number of positions	8/24

PE Contacts	Yes
-------------	-----

Material characteristics

Material（insert）	Polycarbonate（PC）
Materia（Contact）	Copper alloy
Surface（Contact）	Silver plated/gold plated
Flammability rating	V-0
color	Grey/White（RAL 7032）
RoHS	Comply with RoHS exemptions

Electrical parameters

Rated current	16/10A
	400/160V
Rated pulse voltage	6/4KV
Pollution level	3
On the basis of UL /CSARated current	600/300V
Insulation resistance	≥10000MΩ
Contact resistance	≤1/3mΩ
Temperature range	-40℃~+125℃
working life-mating cycles	≥500 time
Strip length	6-8mm
Conductor cross sections（mm²）	0.5-4.0mm² /0.14-2.5mm²
Conductor cross sections(AWG)	20-12/26-12AWG

Standards

Connection meets standards	DIN EN 60664 DIN EN 61984
----------------------------	---------------------------

Accessories

Accessories

Crimping tool Removal tool	/
----------------------------	---

Business data

Order number	21020000126
Packing unit	100
Minimum order quantity	5
Products weight (without packaging)	53