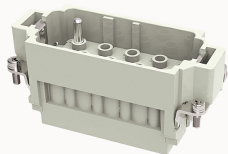


Overview

Product information



DK-12/2-MC-21020000065

Heavy-duty insert, Number of contacts: 12/2+PE, Dimension: 16B, Rated voltage :690/250V, Rated current:40/10A , Male insert, Crimping connector

Product advantages

- ☑Crimping connection technology, high wiring efficiency
- ☑Suitable for vibration occasions;
- ☑The wiring harness can be pre-installed;
- ☑Choose contacts with different wire diameters and coatings;
- ☑High-density pins, saving installation space;
- ☑With grounding protection.

Product certification



Technical data

Product drawing

3D model



Marking

classification	Insert
Series	DK

versions

Connection method	Crimping connection
Female/Male	Male
Dimension	16B
Number of positions	12/2

PE Contacts	Yes
-------------	-----

Material characteristics

Material (insert)	Polycarbonate (PC)
Material (Contact)	Copper alloy
Surface (Contact)	Silver plated/gold plated
Flammability rating	V-0
color	Grey/White (RAL 7032)
RoHS	Comply with RoHS exemptions

Electrical parameters

Rated current	690/250V
Rated pulse voltage	8/4KV
Pollution level	3
On the basis of UL /CSARated current	600/300V
Insulation resistance	≥10000MΩ
Contact resistance	≤0.3/3mΩ
Temperature range	-40℃~+125℃
working life-mating cycles	≥500 time
Strip length	6-9mm
Conductor cross sections (mm²)	1.5-6.0mm²/0.14-2.5mm²
Conductor cross sections(AWG)	16-10/26-14AWG

Standards

Connection meets standards	DIN EN 60664 DIN EN 61984
----------------------------	---------------------------

Accessories

Accessories

Crimping tool|Removal tool

/

Business data

Order number	21020000065
Packing unit	100
Minimum order quantity	5
Products weight (without packaging)	65